

TAP SPARES

TAPSPARES UK FRANKE MINERVA 3-IN-1 UPGRADE TAP INSTALLATION & USER GUIDE

Minerva Version 1, 3-in-1 Original/Irena/Helix/Mondial Upgrade Procedure



INTRODUCTION

This guide explains how to replace a Franke Minerva 3-in-1 Original, Irena, Helix or Mondial tap with a TapSpares UK upgrade tap.

Thank you for purchasing a TapSpares UK Franke Minerva Upgrade Tap. This product has been designed and manufactured to the very highest quality standards. Correctly installed and properly maintained in accordance with the following instructions, it will provide you with reliable service for many years.

Failure to install and maintain the unit in strict accordance with these instructions will invalidate your product warranty. TapSpares UK will not accept liability for damage or accidents resulting from the use of non-genuine components and incorrect installation or operation.

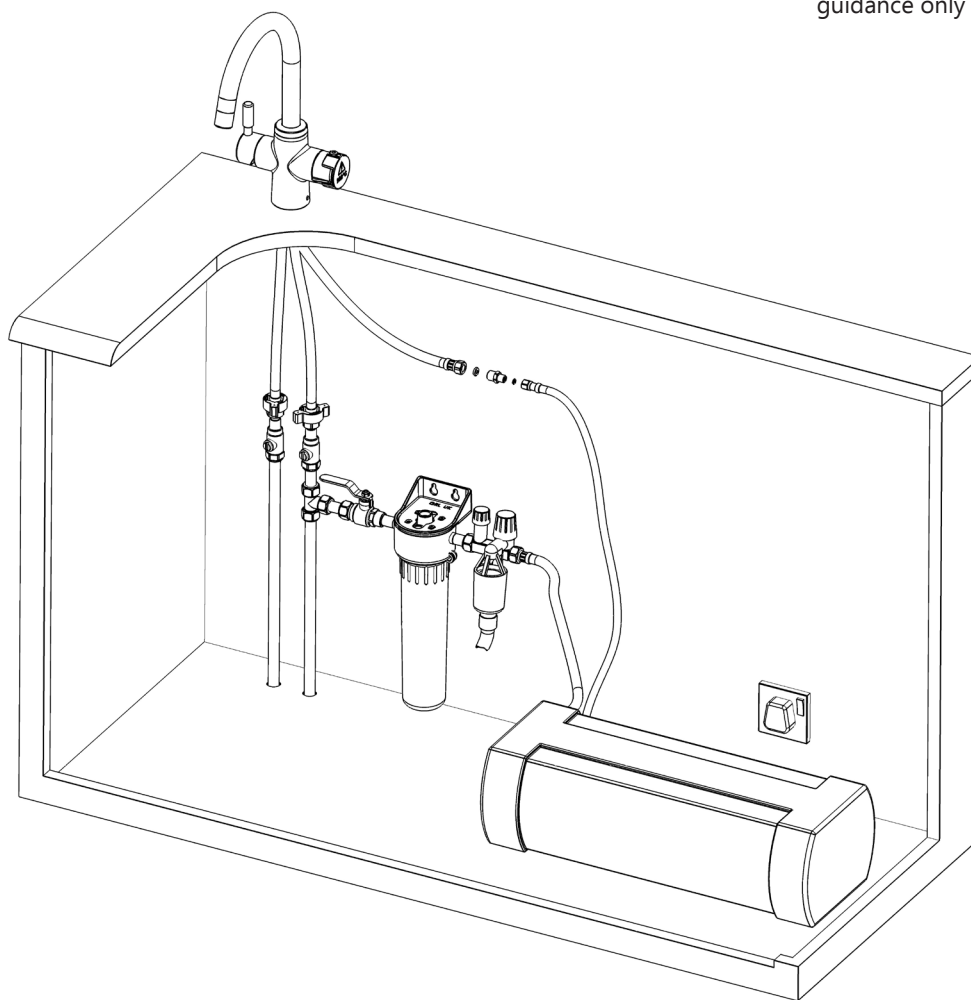
If you are considering carrying out the installation of your TapSpares UK tap as a DIY project, we respectfully suggest you consider the risks associated with installing water appliances. We recommend you engage the services of a qualified installer.

The installation must be carried out in strict accordance with the instructions provided and comply with the UK Water Supply (Water Fittings) Regulations 1999 and safety standards.

APPLICATION

This product is a boiling water device intended for domestic use only. The water supply pressure must be between minimum 1.5 BAR (22 psi) maximum 5 BAR (73psi).

Please Note: This diagram is for guidance only

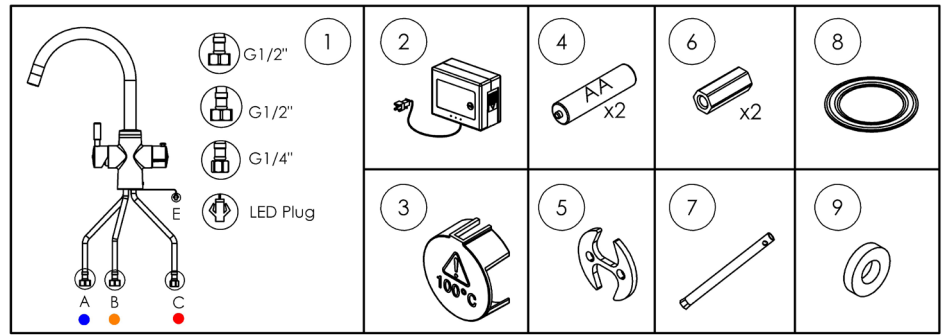


BEFORE YOU BEGIN

1. Before installing the new mixer it is essential that you thoroughly flush through the supply pipes in order to remove any remaining swarf, solder or other impurities. Failure to carry out this simple procedure could cause problems or damage to the workings of the mixer.
2. Locate the existing hot and cold water supply pipes.
3. We recommend the installation of isolation valves on both water supplies to assist with future servicing requirements.
4. Shut off the mains water supply.

COMPONENTS LIST

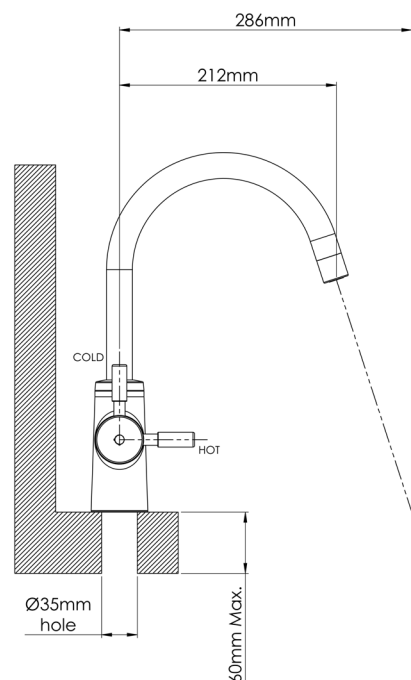
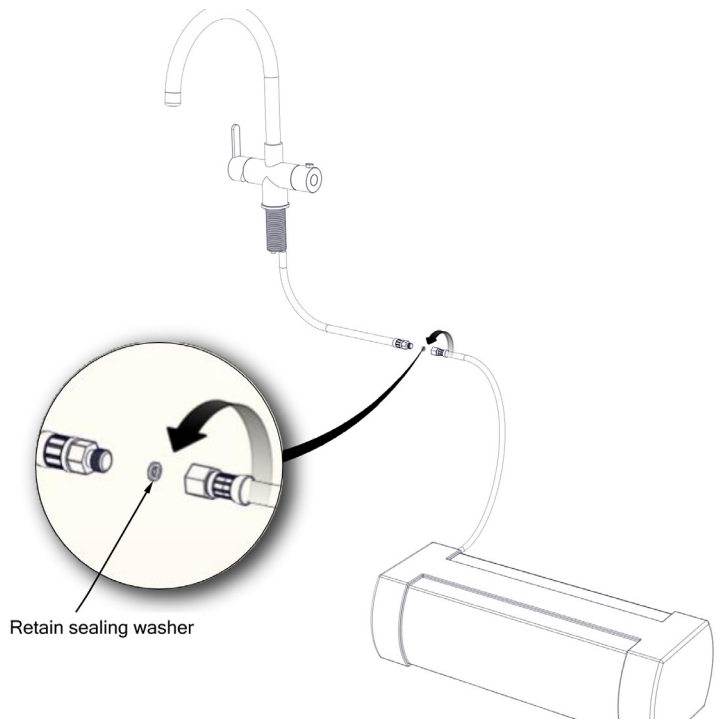
1. TapSpares UK tap
2. Filter cartridge change indicator module
3. Safety clip for boiling water handle
4. AA Batteries for filter cartridge change indicator module x2
5. Tap clamp
6. Tap clamping nut x2
7. Box Spanner for tap clamp nuts
8. Compression washer for underside of tap
9. Washer for boiling water hose



THE INSTALLATION PROCEDURE

REMOVE THE OLD TAP

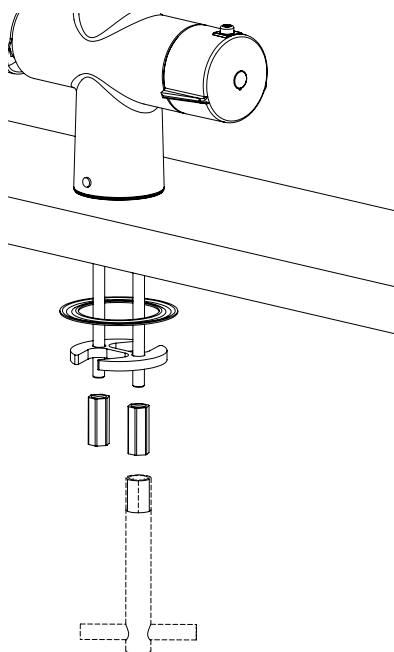
1. Turn off the power supply to the boiler.
2. Turn on the boiling water supply from the tap and run the water until it runs cold.
3. Shut off the water supply to the filter housing by turning the green lever shut off valve.
4. Turn on the boiling water supply again to exhaust the pressure in the system.
5. Locate the existing boiling water outlet hose that runs from the tank and disconnect it where it joins the flexible hose from the tap. The hose will contain residue water, so we recommend having a cloth and suitable container to hand to catch the residual water. Take care to try and catch the copper washer located between the hoses. A spare (9) is provided should the existing washer go missing. Do not be alarmed that the spare washer is fibre rather than copper, it has been specified especially for this application.
6. Unscrew the G1/2" flexible hoses to the respective hot and cold supplies. The hoses will contain residue water, so we recommend having a cloth and suitable container to hand to catch the residual water.
7. Unscrew the black bracing tube holding and washer holding the tap in place from underneath.
8. Remove the old tap.



INSTALLING THE TAPSPARES UK TAP

Important note: The tap fixing studs are factory fitted and should not be tightened or loosened.

1. The tap is design to fit into a standard 35mm diameter hole.
2. Insert the flexible hoses and the wire lead through the 35mm hole. To fit all the hoses through the hole, begin by inserting the hot and cold G1/2" flexible hoses (1.A & 1.B) through first, then thread the boiling water hose (1.C) and the wire lead (1.E) through. The tap hoses push into the tap rather than screw in so do not be alarmed that they rotate inside the body of the tap.
3. Position the tap with the Hot and Cold lever on left as you look at the tap, with the boiling handle on the right.
4. Working inside the cabinet, slide the gasket (8) and the clamp plate (5) over the hoses and the two studs at the base of the tap. Screw the two clamp nuts (6) on to the studs using the box spanner (7).
5. Check the alignment of the tap then tighten the two clamp nuts using the box spanner to firmly secure it on the work surface.



THE PLUMBING

Important Note: Before installing the new tap it is essential that you thoroughly flush through the supply pipes in order to remove any remaining swarf, solder or other impurities. Failure to carry out this simple procedure could cause problems or damage to the workings of the tap.

1. Connect the hot and cold G1/2" flexible hoses to the respective hot and cold supplies and tighten them firmly to make a watertight seal. The tap hose with the blue indicator should be connected to the cold supply and the hose with the orange indicator to the hot supply. The Original tap may have been supplied with adaptors to adapt a 10mm hose connected to the tap to 15mm. If so, these will no longer be required for the replacement tap.
2. Take the M10 female nut boiler Outlet Hose and connect this to the Boiling Water Inlet Hose (1.C) connected to the tap using the existing copper washer or the spare provided.
Important Note: Do Not Overtighten. Overtightening this connection will crack the nut.

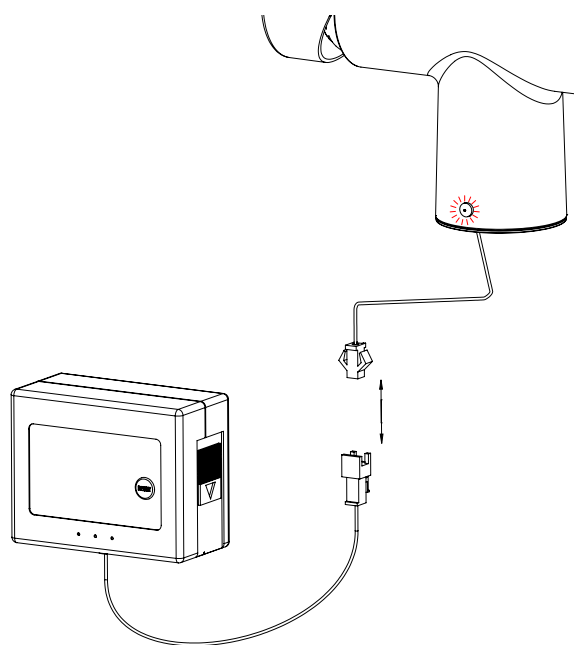
INSTALL THE FILTER CHANGE INDICATOR MODULE

1. Choose a convenient location for the module, making sure that the attached power cable is within easy reach of the mating cable attached to the base of the tap.
2. Secure the module in place using the self-adhesive Velcro pad provided.
3. Plug the two cables together.
4. Install the 2x AA batteries (4) in the module (2). A "bleep" will confirm that they are correctly installed. The LED light on the tap will glow RED followed by YELLOW before turning off.

The LED indicator:

Red - Indicates that the water filter cartridge needs replacing.

Yellow - Indicates that the two AA batteries in the module need replacing.



COMMISSIONING THE SYSTEM

1. Turn on the water supply.
2. Operate the mains hot and cold functions and check for leaks.
3. Operate the boiling water function for 3 minutes to flush the system. (Please see the OPERATING THE TAPSPARES UK TAP below).
4. Turn off the tap and check the connections for leaks.
5. Turn the power supply back on to the boiler.
6. Wait for 10 minutes and check water is discharging into the Tundish. Important note: If, during the heating-up period, water does not start to discharge into the tundish within 10 minutes, switch off the power immediately and open the boiling water tap to release the pressure. Consult the boiler troubleshooting guide.
7. Allow approximately 20 minutes for the boiler to reach full operating temperature.
8. Operate the tap boiling water function for a minute to exhaust trapped air from the system.
9. The system is now ready for use.

OPERATING THE TAPSPARES UK TAP

The body of the tap is clearly marked to show the 3 functions.

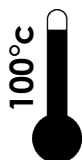
NORMAL UNFILTERED MAINS HOT AND COLD WATER.

The hot and cold water is controlled in the normal manner by the lever opposite the boiling/cold filtered water lever.

BOILING FILTERED WATER

Remove the red safety clip (3)

Depress the button on the boiling water handle to release the safety lock and rotate it.



Important Note. It is the responsibility of the user to check that the tap is shut off correctly. The safety clip can only be re-fitted when the handle is correctly located in the OFF position.

THE CORRECT WAY TO DISPENSE THE BOILING WATER.

Position the outlet of the spout inside the receptacle you are about to fill (saucepan, cup or jug for example). Operate the boiling water while gradually lowering the receptacle as it fills.

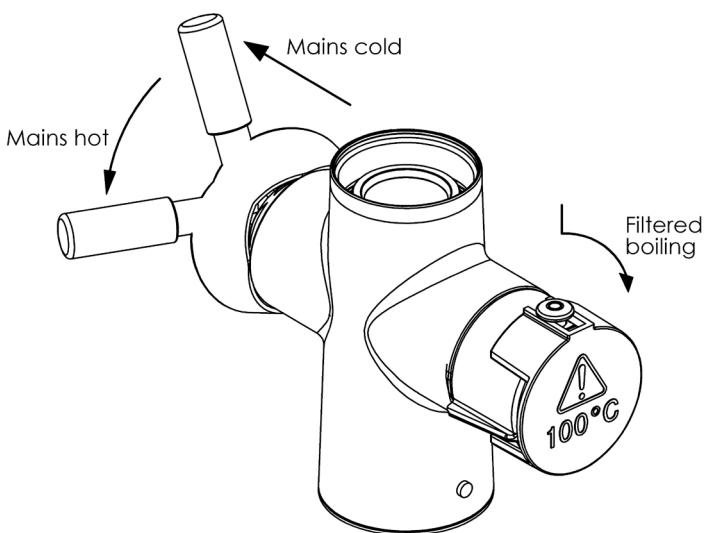
CARE AND MAINTENANCE

CLEANING THE TAPSPARES UK UPGRADE TAP

To maintain the appearance of this fitting, ensure it is cleaned off using a clean, soft damp cloth. A solution of warm water and mild liquid detergent may be used where necessary, and then the fitting rinsed thoroughly. Abrasive cleaners or acidic cleaners **MUST NOT BE USED** under any circumstances. Avoid contact with all solvents.

CHANGING THE BATTERIES IN THE FILTER CARTRIDGE CHANGE MODULE.

If necessary, separate the module from the Velcro pad and slide off the battery cover at the side of the module. Remove the battery carrier and replace the two old AA batteries with two new ones. Press the reset button.



GUARANTEE

This TapSpares UK product is guaranteed against any mechanical defect for 5 years, 1 year on the tap finish. You should retain your dated invoice as proof of purchase to validate any claims under our guarantee. The guarantee will be valid from the date of purchase as shown on the sales invoice. This appliance is intended for domestic use only. The guarantee does not apply to products installed outside a domestic environment.

WHAT IS COVERED BY THE TAPSPARES UK GUARANTEE?

The repair or replacement of all or part of your tap if your tap is found to be defective due to faulty materials or manufacture within the relevant guarantee periods at TapSpares UK discretion.

If any part is no longer available, or out of manufacture, TapSpares UK reserve the right to replace it with a suitable alternative.

TERMS AND CONDITIONS OF THE TAPSPARES UK GUARANTEE

The guarantee is valid for the UK.

The guarantee becomes effective at the date of purchase or at the date of delivery if this is later.

Proof of purchase is required under the terms of the guarantee.

The guarantee provides benefits in addition to your statutory consumer rights.

TAPSPARES UK DOES NOT GUARANTEE THE REPAIR OR REPLACEMENT OF A PRODUCT THAT HAS FAILED FOR ANY OF THE FOLLOWING REASONS:

- Faulty installation, repairs or alterations not in accordance with the installation guide.
- Normal wear and tear.
- Accidental damage or faults caused by negligent use or care; misuse; neglect; careless operation and failure to use the system in accordance with the TapSpares UK operating guidelines.
- The use of anything other than genuine TapSpares UK replacement parts.
- Failures of, or failures caused by, parts not supplied as part of the genuine TapSpares UK tap.

HOW DO I MAKE A CLAIM UNDER MY GUARANTEE?

If you are in doubt about what is covered by your guarantee, or wish to discuss a claim, please call please call TapSpares UK on 01603 559 096 Monday to Friday between the hours of 9.00am and 5.00pm.

If you are calling for the first time please have your receipt to hand so that we can record your date of purchase.

The company reserves the right to alter, change or modify product specifications without prior notice.

TapSpares UK
Old Winery Business Park Chapel Street
Cawston, Norfolk
NR10 4FE

Phone: +44 (0)1603 559 096 Email:
support@tapsparesuk.com

Part No: 999713

TapSpares UK is a trading name of Greg Rowe Limited